

PUN Index GME

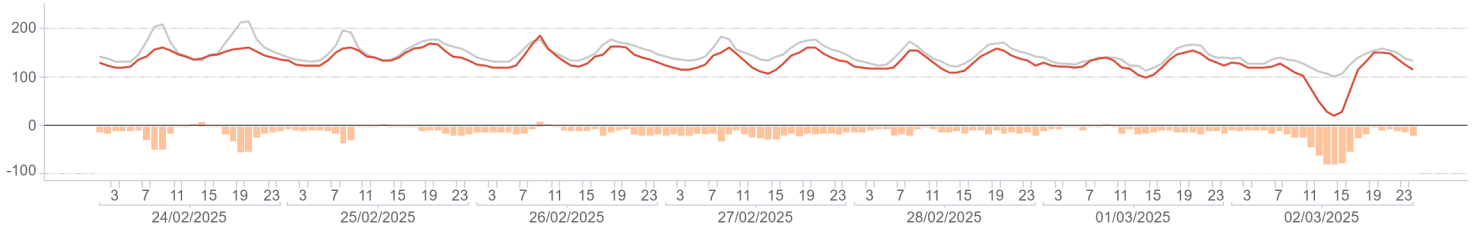
	Average (€/MWh)	Change (€/MWh)	Change (%)
Baseload	132,70	-15,68	-10,6%
<i>Peak</i>	144,46	-13,04	-8,3%
<i>Off-peak</i>	126,17	-17,15	-12,0%
Hourly maximum	185,47		
Hourly minimum	20,10		

Volumes

	MWh	Average (MWh)	Change (%)	
Total supply	National	9.019.085	53.685	1,8%
	Foreign	1.183.483	7.045	-12,1%
	Total	10.202.568	60.730	-0,1%
Sales	National	4.622.089	27.512	2,3%
	Foreign	1.099.142	6.543	-15,6%
	Total	5.721.231	34.055	-1,7%
Purchases	National	5.506.640	32.778	-2,1%
	Foreign	214.591	1.277	9,9%
	Total	5.721.231	34.055	-1,7%

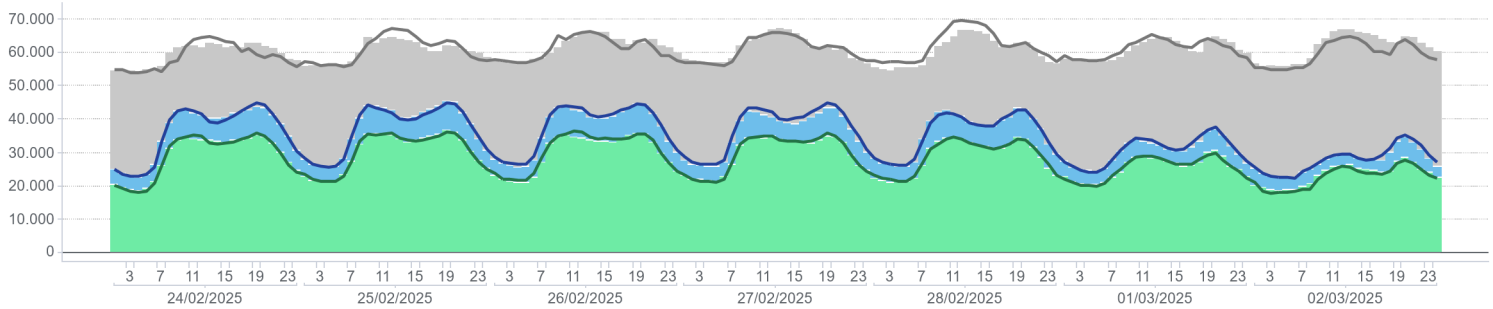
PUN Index GME (€/MWh)

Hourly price / previous week / Price delta



Volumes Supplied, Sold and Purchased (MWh)

Volume unsold / Off-IPEX Sales / On-IPEX Sales / On-IPEX Sales - prev. week / Off-IPEX Sales - prev. week / Volume unsold prev. week



Electricity Supply

	MWh	Change (%)	Structure
IPEX	4.681.631	-0,9%	81,8%
<i>Market participants</i>	3.198.444	5,1%	55,9%
<i>GSE</i>	396.837	-3,5%	6,9%
<i>Foreign zones</i>	1.086.350	-14,3%	19,0%
<i>Balance of PCE schedules</i>	0		0,0%
PCE (including MTE)	1.039.600	-5,3%	18,2%
<i>Foreign zones</i>	12.792	-62,9%	0,2%
<i>National zones</i>	1.026.808	-3,5%	17,9%
<i>Balance of PCE schedules</i>	0		0,0%
VOLUMES SOLD	5.721.231	-1,7%	100,0%
VOLUMES UNSOLD	4.481.337	2,2%	
TOTAL SUPPLY	10.202.568	-0,1%	

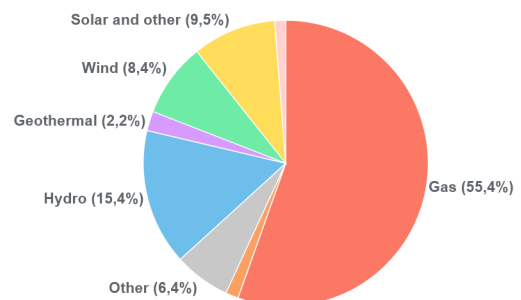
Electricity Demand

	MWh	Change (%)	Structure
IPEX	4.681.631	-0,9%	81,8%
<i>Acquirente Unico</i>	110.959	-6,0%	1,9%
<i>Other market participants</i>	3.691.320	-3,5%	64,5%
<i>Pumped-storage plants</i>	24.528	25,4%	0,4%
<i>Foreign zones</i>	214.491	10,3%	3,7%
<i>Balance of PCE schedules</i>	640.333	13,2%	11,2%
PCE (including MTE)	1.039.600	-5,3%	18,2%
<i>Foreign zones</i>	100	-87,7%	0,0%
<i>Acquirente Unico - National zones</i>	7.800	8,3%	0,1%
<i>Other participants - National zones</i>	1.672.033	1,0%	29,2%
<i>Balance of PCE schedules</i>	-640.333	13,2%	-11,2%
VOLUMES PURCHASED	5.721.231	-1,7%	100,0%
VOLUMES UNPURCHASED	258.617	2,8%	
TOTAL DEMAND	5.979.848	-1,5%	

Volumes Sold by Source

	Total (MWh)	Average (MWh)	Change (MWh)	Change (%)
Conventional	2.924.591	17.408	-927	-5,1%
<i>Gas</i>	2.562.671	15.254	-954	-5,9%
<i>Coal</i>	67.463	402	28	7,4%
<i>Other</i>	294.457	1.753	-1	0,0%
Renewable	1.640.109	9.763	1.357	16,1%
<i>Hydro</i>	712.019	4.238	67	1,6%
<i>Geothermal</i>	102.277	609	-1	-0,1%
<i>Wind</i>	387.274	2.305	1.374	147,5%
<i>Solar and other</i>	438.539	2.610	-83	-3,1%
Pumped storage	57.389	342	184	116,1%
Total	4.622.089	27.512	613	2,3%

Volumes Sold by Source



Zonal price

	Northern IT		Central-northern IT		Central-southern IT		Southern IT		Calabria		Sicilia		Sardegna	
	€/MWh	Var	€/MWh	Var	€/MWh	Var	€/MWh	Var	€/MWh	Var	€/MWh	Var	€/MWh	Var
Baseload	132,93	-10,3%	133,16	-10,3%	132,82	-10,6%	132,82	-10,6%	130,49	-12,1%	133,50	-10,2%	125,08	-15,8%
<i>Peak</i>	144,52	-8,2%	144,71	-8,2%	143,76	-8,8%	143,76	-8,8%	137,35	-12,6%	158,62	0,9%	122,07	-22,5%
<i>Off-peak</i>	126,49	-11,6%	126,75	-11,7%	126,75	-11,7%	126,75	-11,7%	126,68	-11,7%	119,55	-16,9%	126,75	-11,7%
Hourly maximum	185,47		185,47		185,47		185,47		185,47		282,00		185,47	
Hourly minimum	20,10		20,10		20,10		20,10		20,10		0,00		0,00	

Zonal volumes

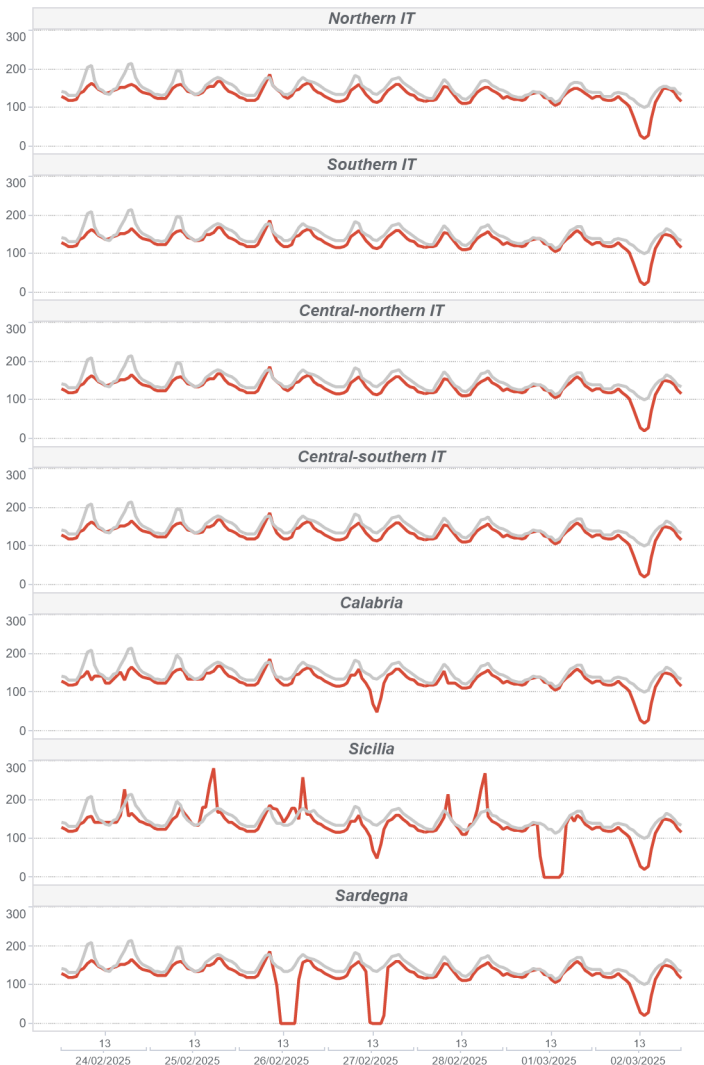
		Northern IT		Central-northern IT		Central-southern IT		Southern IT		Calabria		Sicilia		Sardegna	
		MWh	Var	MWh	Var	MWh	Var	MWh	Var	MWh	Var	MWh	Var	MWh	Var
Total supply	<i>Total</i>	4.626.988	23.156	388.629	1.019	1.443.124	-22.358	1.006.596	19.342	605.075	-2.845	656.354	139.897	292.319	-1.270
Sales	<i>Total</i>	2.391.751	-322	321.083	879	601.509	32.234	507.391	-3.896	298.267	-33.643	273.945	95.291	228.144	12.494
Purchase	<i>Total</i>	3.172.255	-77.245	475.596	-8.587	969.699	-16.396	335.686	-4.618	103.973	-2.637	304.523	-6.407	144.910	-3.350
Total supply	<i>Average</i>	27.542	0,50%	2.313	0,26%	8.590	-1,53%	5.992	1,96%	3.602	-0,47%	3.907	27,09%	1.740	-0,43%
Sales	<i>Average</i>	14.237	-0,01%	1.911	0,27%	3.580	5,66%	3.020	-0,76%	1.775	-10,14%	1.631	53,34%	1.358	5,79%
Purchase	<i>Average</i>	18.882	-2,38%	2.831	-1,77%	5.772	-1,66%	1.998	-1,36%	619	-2,47%	1.813	-2,06%	863	-2,26%

Volumes sold by Source. Hourly Average

		Northern IT		Central-northern IT		Central-southern IT		Southern IT		Calabria		Sicilia		Sardegna	
		MWh	Var	MWh	Var	MWh	Var	MWh	Var	MWh	Var	MWh	Var	MWh	Var
Conventional		9.995	-0,7%	804	-2,7%	2.005	-8,3%	1.792	-11,4%	1.381	-18,3%	659	6,5%	774	-16,7%
<i>Gas</i>		9.041	-0,5%	742	-3,0%	1.771	-9,1%	1.528	-13,4%	1.274	-19,9%	600	2,2%	298	-35,5%
<i>Coal</i>		-	-	-	-	-	-	-	-	-	-	-	-	402	7,4%
<i>Other</i>		954	-1,9%	62	1,3%	233	-1,8%	264	1,8%	106	9,2%	59	84,5%	75	-20,3%
Renewable		4.044	-0,5%	1.107	2,5%	1.479	24,4%	1.228	20,4%	395	37,7%	972	118,5%	537	68,6%
<i>Hydro</i>		2.555	-0,1%	301	7,5%	651	5,7%	319	-12,9%	134	16,2%	169	12,9%	109	25,6%
<i>Geothermal</i>		-	-	609	-0,1%	-	-	-	-	-	-	-	-	-	-
<i>Wind</i>		29	4,2%	25	35,0%	433	167,3%	706	77,7%	202	84,2%	623	390,2%	288	221,5%
<i>Solar and other</i>		1.459	-1,4%	173	0,4%	395	-3,9%	203	-20,9%	59	-4,2%	180	7,0%	140	-1,5%
Pumped storage		198	80,8%	-	-	96	670,1%	-	-	-	-	-	-	47	30,8%
Total		14.237	0,0%	1.911	0,3%	3.580	5,7%	3.020	-0,8%	1.775	-10,1%	1.631	53,3%	1.358	5,8%

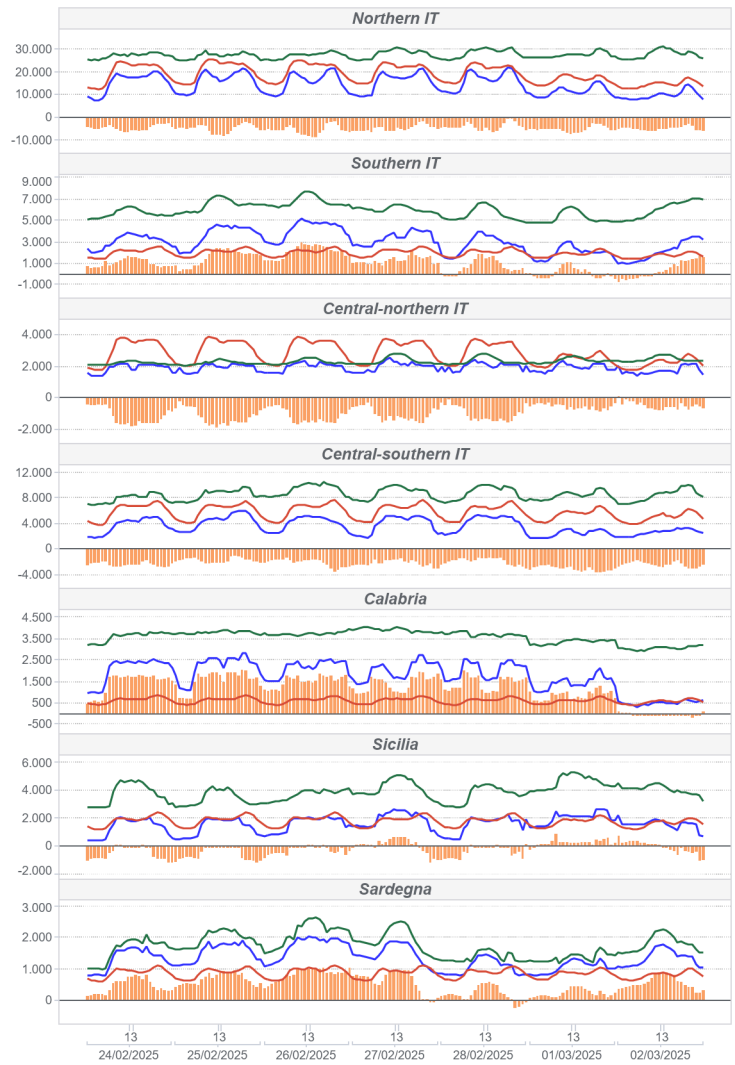
Zonal Price (€/MWh)

● Hourly price ● previous week



Zonal Volumes (MWh)

■ Sales ■ Purchases ■ Offers ■ Flow

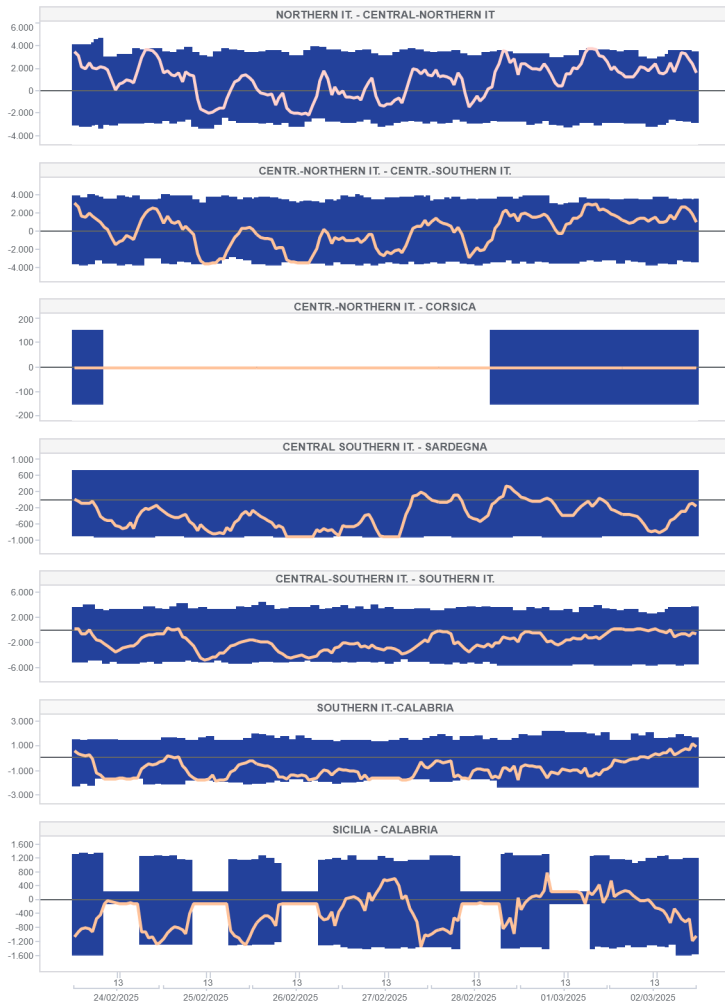


Transmissions

		Direction frequency		Average Physical Transmission Rights Assigned		Average flow		Average use of Physical Transmission Rights Assigned	
		Week. n.8	Week. n.9	Week. n.8	Week. n.9	Week. n.8	Week. n.9	Week. n.8	Week. n.9
France - Northern It.	FRAN-NORD	0,0%	0,0%	0	0	0	0		
	NORD-FRAN			0	0	0	0		
	SVIZ-NORD	100,0%	97,6%	3.978	4.034	2.837	2.236	71,3%	54,1%
Switzerland - Northern It.	NORD-SVIZ		2,4%	3.074	2.836	0	418	0,0%	-0,2%
	AUST-NORD	0,0%	0,0%	0	0	0	0		
	NORD-AUST			0	0	0	0		
Austria - Northern It.	CSUD-MONT	45,8%	52,4%	689	652	447	458	29,7%	36,8%
	MONT-CSUD	54,2%	47,6%	674	712	402	356	32,3%	23,8%
	SLOV-NORD	0,0%	0,0%	0	0	0	0		
Montenegro - Central Southern It.	NORD-SLOV			0	0	0	0		
	GREC-SUD	0,0%	0,0%	25	25	0	0	0,0%	0,0%
	SUD-GREC			25	25	0	0	0,0%	0,0%
Slovenia - Northern It.									
Greece - Southern It.									
Centr.-Northern It. - Centr.-Southern It.	CNOR-CSUD	66,7%	56,5%	3.473	3.624	1.657	1.420	1,2%	0,0%
	CSUD-CNOR	33,3%	43,5%	3.379	3.411	1.135	1.660	0,6%	5,4%
	NORD-CNOR	86,9%	71,4%	4.257	3.461	2.037	1.799	4,2%	3,6%
Northern It. - Central-Northern It.	CNOR-NORD	13,1%	28,6%	3.148	2.827	506	994	0,0%	0,0%
	CNOR-CORS	1,2%		150	150	137	0	0,6%	61,9%
	CORS-CNOR	0,6%	0,0%	150	150	97	0	0,0%	61,9%
Central-Northern It. - Corsica	CSUD-SARD	10,1%	13,1%	720	720	64	105	0,0%	0,0%
	SARD-CSUD	89,9%	86,9%	887	887	327	459	0,0%	7,7%
	CSUD-SUD	8,9%	11,9%	3.185	3.494	488	185	0,0%	0,0%
Centro Sud - Sardegna	SUD-CSUD	91,1%	88,1%	4.976	5.136	1.645	2.064	0,0%	0,0%
	CORS-SARD	1,2%	0,0%	150	150	112	0	0,0%	0,0%
	SARD-CORS	98,8%	99,4%	150	150	29	29	0,0%	0,0%
Centro Sud - Sud	SUD-CALA	28,6%	14,9%	1.586	1.653	349	397	0,0%	0,0%
	CALA-SUD	71,4%	85,1%	1.757	1.995	779	1.090	3,6%	15,5%
	SICI-CALA		26,2%	1.376	913	0	241	0,0%	4,8%
Southern It.-Calabria	CALA-SICI	100,0%	73,8%	1.572	966	884	476	4,2%	23,2%
	SICI-MALT	98,2%	97,0%	225	225	99	109	1,8%	4,8%
	MALT-SICI	0,0%	0,0%	225	225	0	0	0,0%	0,0%
Sicilia - Calabria	COAC-SARD	0,0%	0,0%	23	23	0	0		
	SARD-COAC	100,0%	100,0%	109	109	86	82	0,0%	0,0%
Sicilia - Malta									
Sardegna - Corsica AC									
Southern It.-Grecia Coupling	SUD-XGRE	52,4%	23,8%	500	500	439	461	38,7%	91,1%
	XGRE-SUD	47,6%	4,8%	500	500	440	316	36,9%	73,8%
	NORD-COUP			10.000	10.000	0	0	0,0%	0,0%
IT Coupling - Northern It.	COUP-NORD	100,0%	100,0%	10.000	10.000	3.971	3.474	0,0%	0,0%
	COUP-XAUS	16,1%	31,5%	138	141	131	135	14,9%	29,2%
	XAUS-COUP	82,7%	68,5%	320	315	308	320	78,0%	63,7%
Coupling - Austria Coupling	COUP-XFRA			2.059	2.052	0	0	0,0%	0,0%
	XFRA-COUP	100,0%	100,0%	3.622	3.348	3.561	3.319	96,4%	95,8%
	COUP-BSP	31,0%	47,6%	667	679	625	627	24,4%	39,9%
Coupling - France Coupling	BSP-COUP	67,9%	52,4%	561	534	543	529	57,7%	42,9%

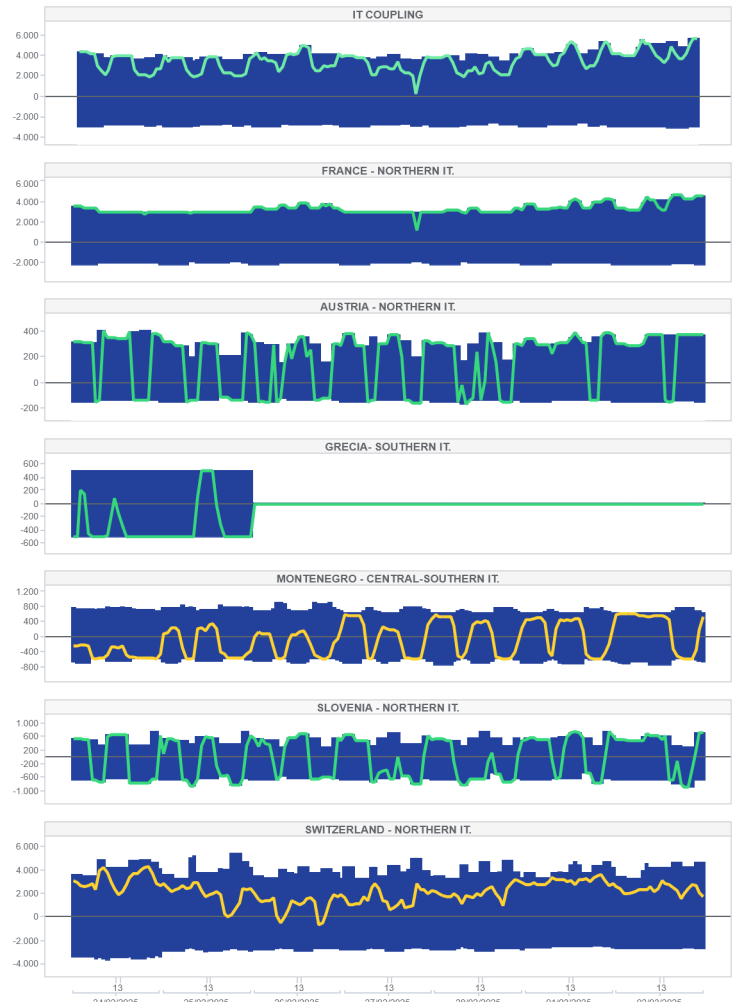
National transmissions (MWh)

Import Limit Export Limit Flow



Foreign transmissions (MWh)

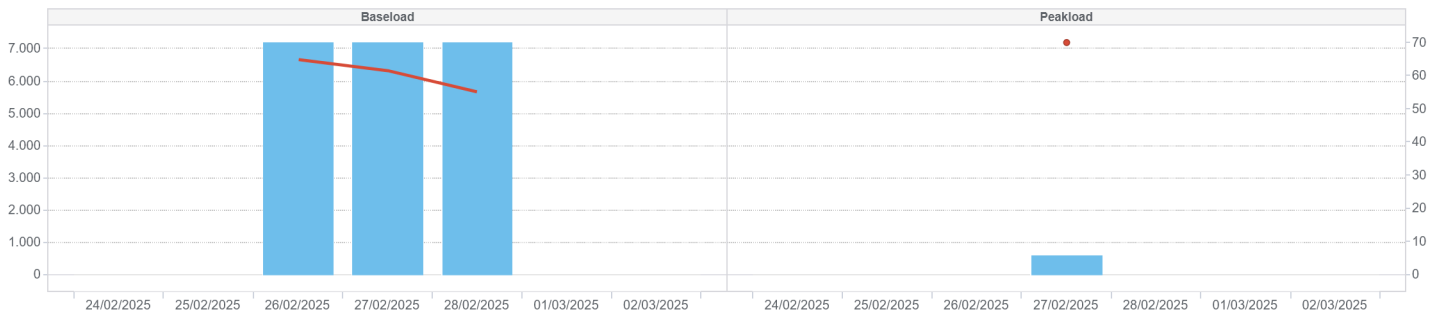
Net Import Net Import Explicit Auction Export Limit Import Limit



MPEG

Prodotti	Minimum price (cent. €/MWh)	Maximum price (cent. €/MWh)	Average price (cent. €/MWh)	Volumes (MW)	Volumes (MWh)	Open position (MW)	Open position (MWh)
24/02/2025							
25/02/2025							
Baseload							
26/02/2025	65,00	65,00	65,00	300	7200,00	300	7.200
27/02/2025	60,00	70,00	61,66	300	7200,00	300	7.200
28/02/2025	55,00	55,00	55,00	300	7200,00	300	7.200
01/03/2025							
02/03/2025							
24/02/2025							
25/02/2025							
Peakload							
26/02/2025							
27/02/2025	70,00	70,00	70,00	50	600,00	50	600
28/02/2025							
TOTALE				950	22.200		

▒ Volumes ↗ Average price



MTE

	Minimum price (€/MWh)	Maximum price (€/MWh)	Control price (€/MWh)	Control price (change)	Trades	Volumes (MWh)	Volumes (MW)	Volumes OTC (MWh)	Volumes OTC (MW)	Volumes (change)	Open position (MW)	Open position (MWh)
Baseload												
BL-M-2025-03			160,82	0,0%		0,0	0,0	1,0	743,0		13	9.659
BL-M-2025-04			120,80	-16,0%		0,0	0,0	0,0	0,0		0	0
BL-M-2025-05			111,71	-16,6%		0,0	0,0	0,0	0,0		0	0
BL-M-2025-06			108,07			0,0	0,0	0,0	0,0		0	0
BL-Q-2025-02			113,51	-6,9%		0,0	0,0	3,0	6.552,0		9	19.656
BL-Q-2025-03			123,22	-13,8%		0,0	0,0	0,0	0,0		6	13.248
BL-Q-2025-04			131,06	0,0%		0,0	0,0	0,0	0,0		6	13.254
BL-Q-2026-01			122,21	-14,4%		0,0	0,0	0,0	0,0		0	0
BL-Y-2026			109,82	0,0%		0,0	0,0	0,0	0,0		0	0
PL-M-2025-03			171,85	0,0%		0,0	0,0	0,0	0,0		0	0
PL-M-2025-04			132,00	-13,4%		0,0	0,0	0,0	0,0		0	0
PL-M-2025-05			118,77	-11,5%		0,0	0,0	0,0	0,0		0	0
PL-M-2025-06			112,84			0,0	0,0	0,0	0,0		0	0
Peakload												
PL-Q-2025-02			121,33	-0,4%		0,0	0,0	0,0	0,0		0	0
PL-Q-2025-03			147,46	0,0%		0,0	0,0	0,0	0,0		0	0
PL-Q-2025-04			141,38	0,0%		0,0	0,0	0,0	0,0		0	0
PL-Q-2026-01			139,70	0,0%		0,0	0,0	0,0	0,0		0	0
PL-Y-2026			117,41	0,0%		0,0	0,0	0,0	0,0		0	0

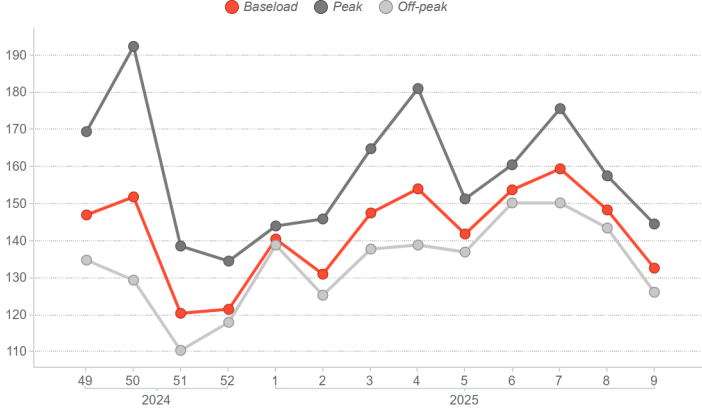
PCE

	Registered transaction (MWh)	% change	Structure
Baseload	466.718	-5,1%	11,7%
Peak	1.890	0,0%	0,0%
Non Standard	3.487.197	0,1%	87,6%
Bilateral	3.955.805	-0,5%	99,4%
MTE	2.064	2,4%	0,1%
MPEG	22.200	149,3%	0,6%
Total PCE	3.980.069	-0,2%	100,0%
Net position	2.555.057	1,3%	64,2%

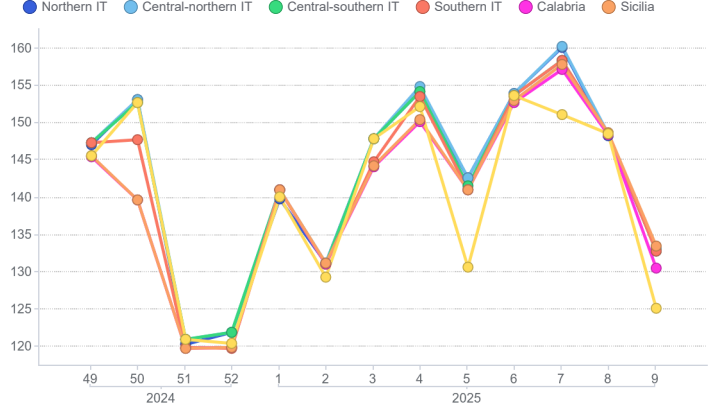
Programs

Schedules	Injection (MWh)	Injection (change)	Withdrawal (MWh)	Withdrawal (change)
Requested	1.313.260	-2,7%	1.679.937	1,0%
Rejected	273.660	8,7%	4	-78,0%
Registered	1.039.600	-5,3%	1.679.933	1,0%
Scheduled deviation	1.515.458	6,4%	875.124	1,8%
Balance of schedules	0		640.333	

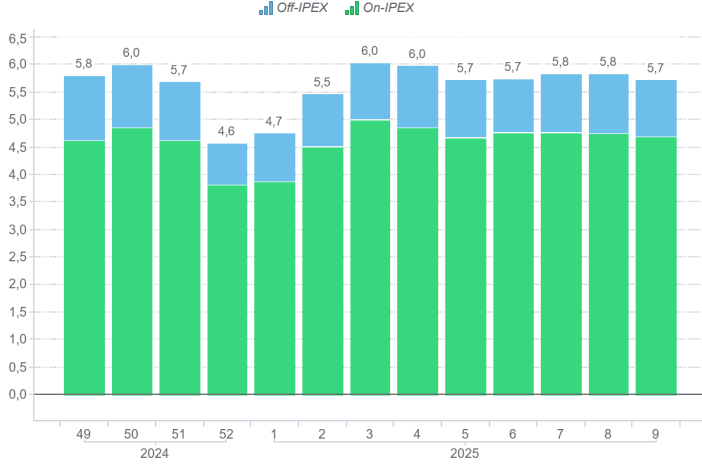
MGP - PUN Index GME (€/MWh)



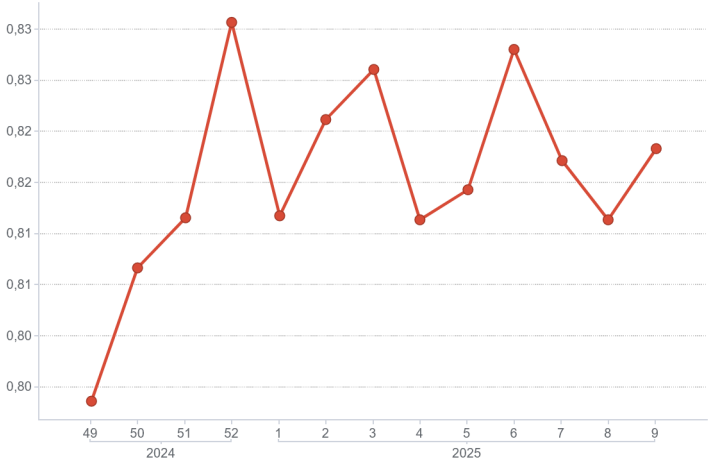
MGP - Zonal Price (€/MWh)



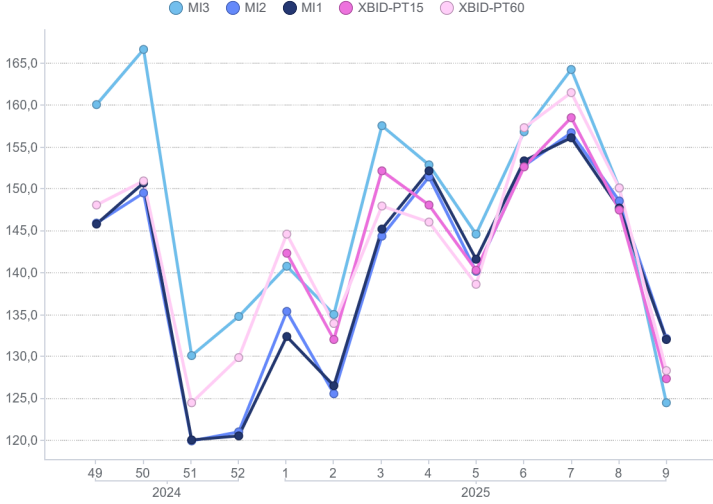
MGP - Volumes (TWh)



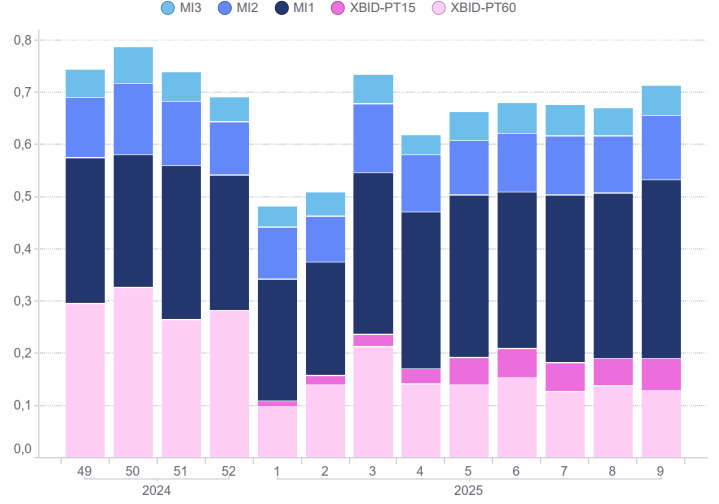
MGP - Liquidity (%)



Intra-Day Market (MI) - Prices (€/MWh)

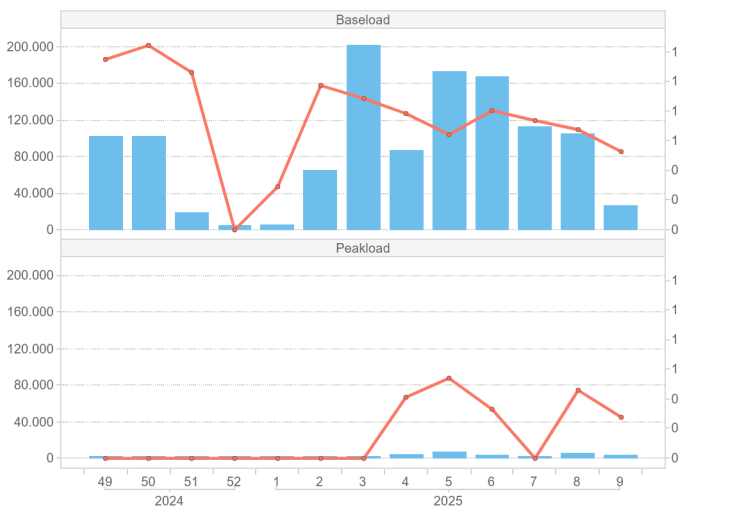


MI - Volumes (TWh)



MPEG

Volumes (MWh-axis sx) Average price (€/MWh-axis dx)



PCE

Contracts Net position Turnover (axis dx)

